



ProcessBook, DataLink & RtWebParts: 新功能

李捍永 & Felicia Tan,
技术工程师

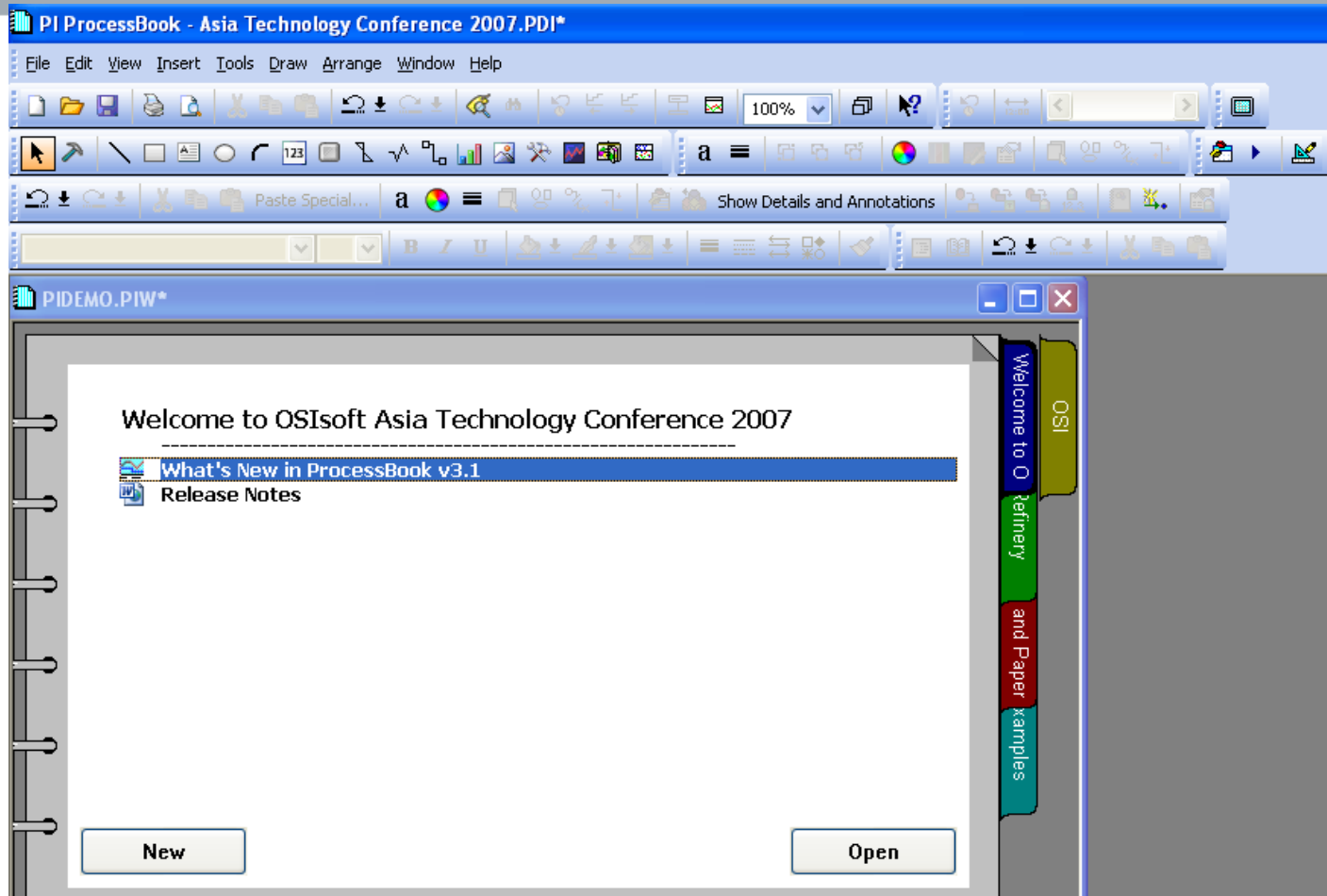
Agenda

- ProcessBook
- DataLink and DLES
- RtWebParts

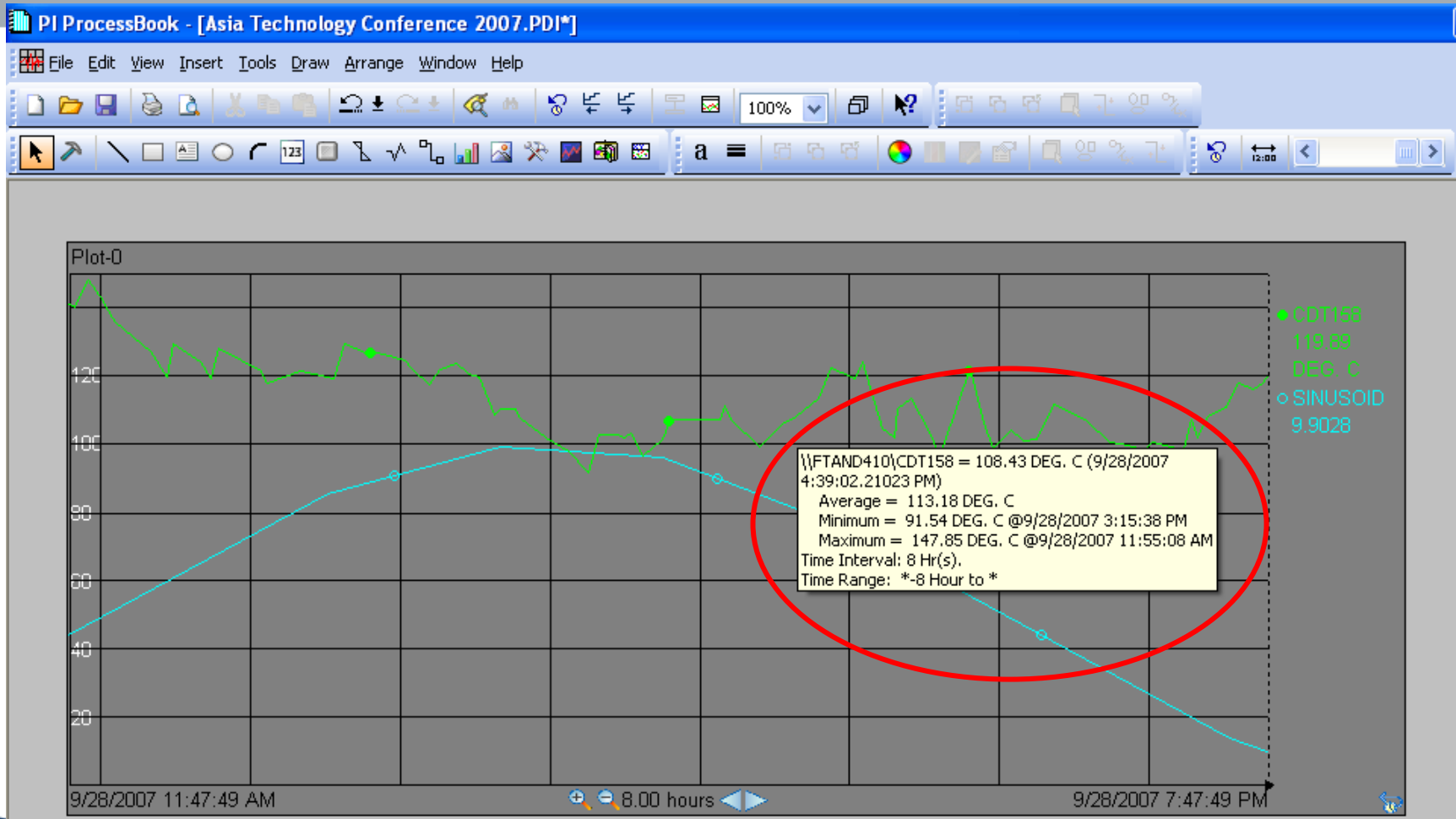
PB 3.0: Richer Experience

- More data and more types of data
 - Sub-second time
- Highlight attributes about data events
 - Questionable, Substituted, Annotated
- XY Plot with data pairing options
- Client time Vs Server time
- Allow user's domain login
- Non-intrusive error reporting

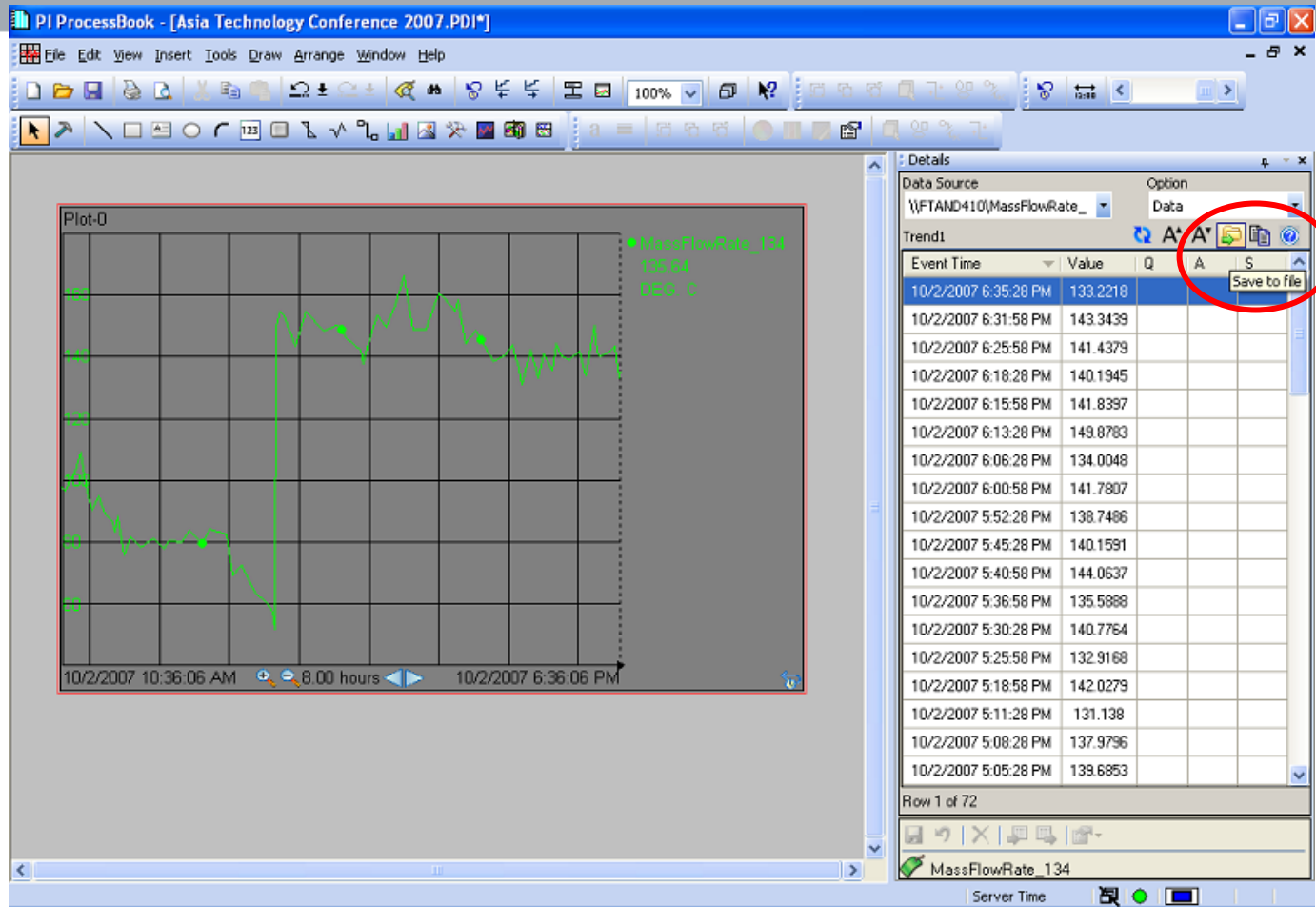
New Look PB 3.1



Tooltips Statistics



Details



Save to file

And the rest

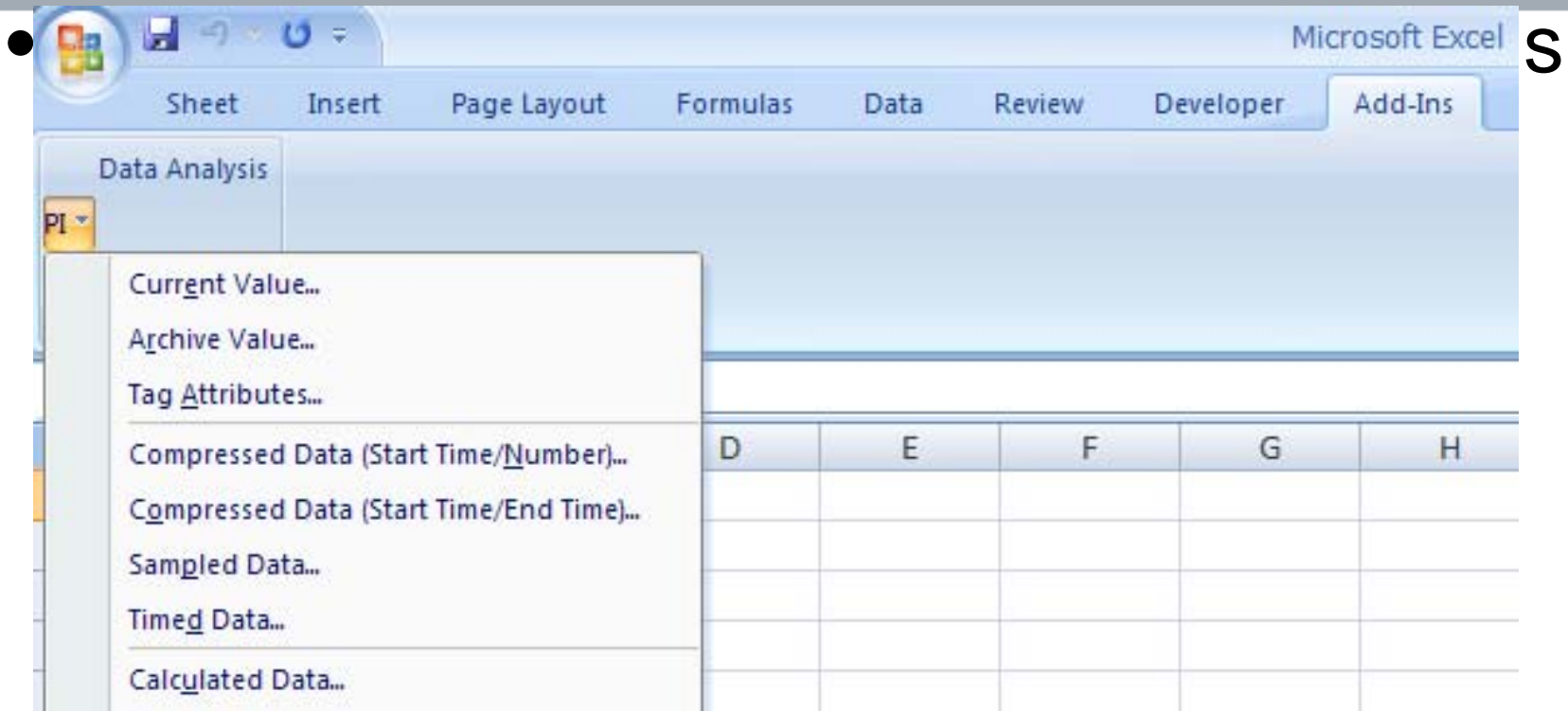
- Hide individual traces on a trend
- New Formatting toolbar and Format painter toolbar
- Improved performance and support for very large displays
- AF modeler installed by default

DataLink

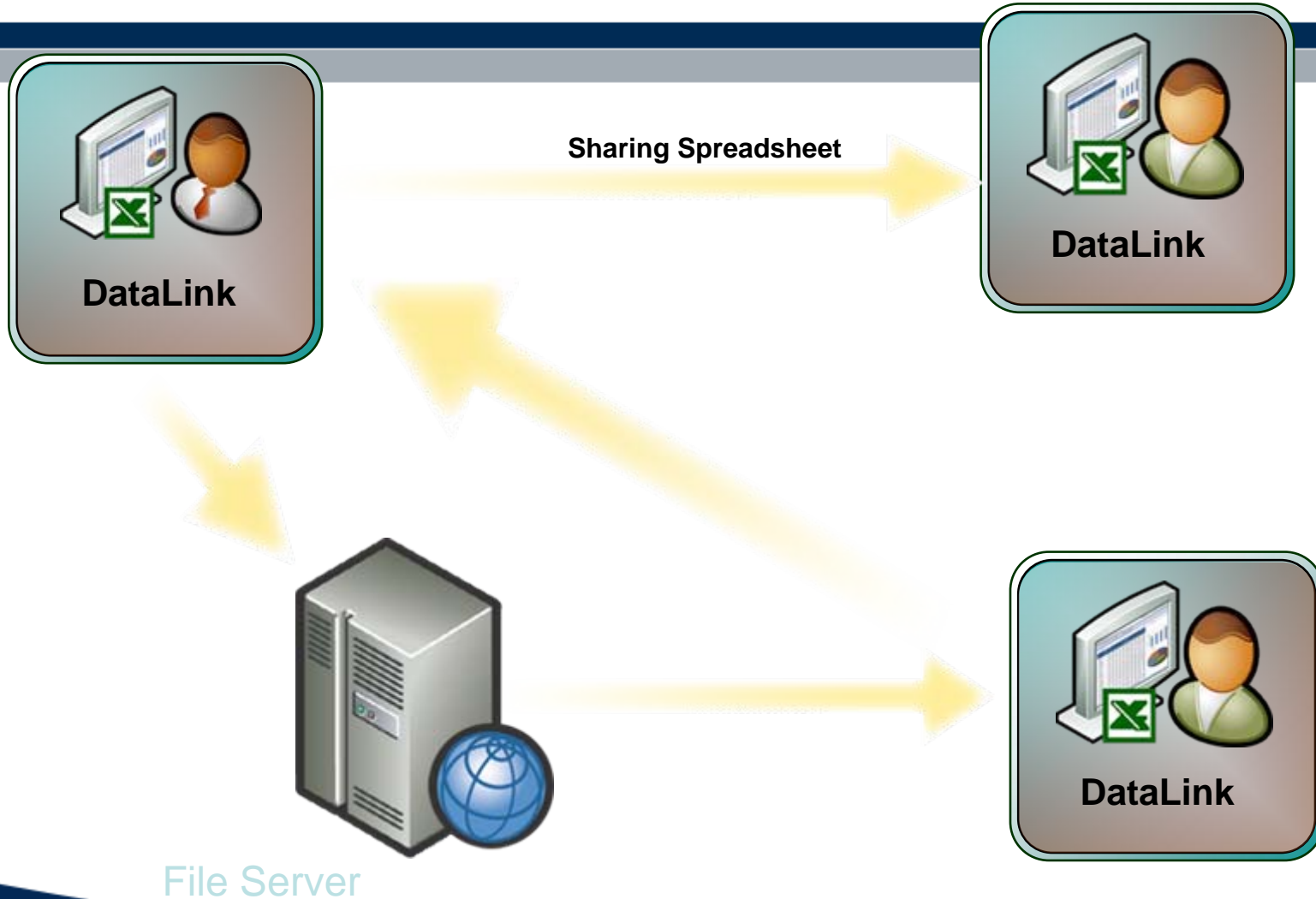
Excel 2007 & MOSS

- Excel 2007
 - Datalink is supported
- Microsoft Office Sharepoint Server (MOSS)
 - Datalink for Excel Service (DLES)

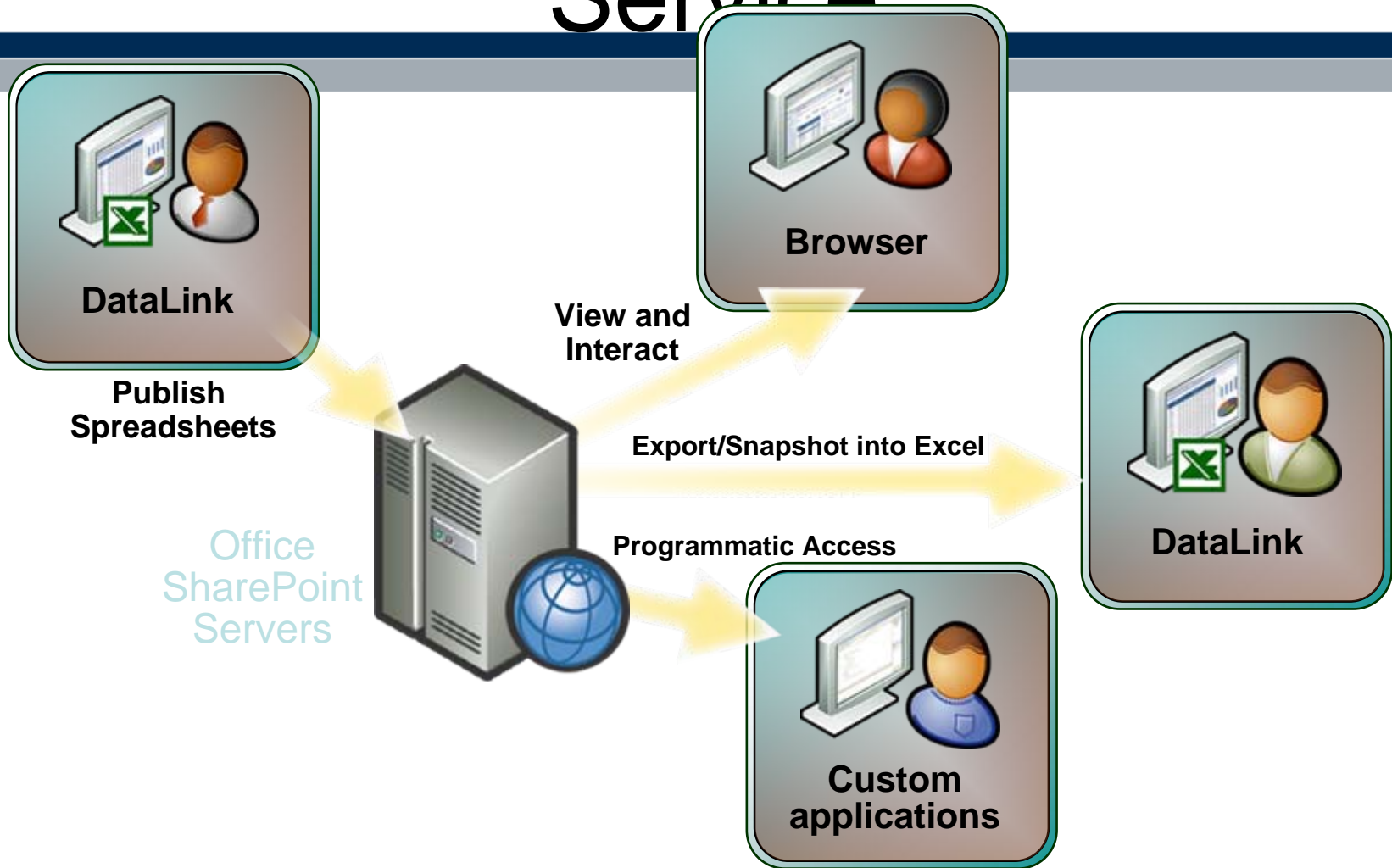
Current Datalink in Excel 2007



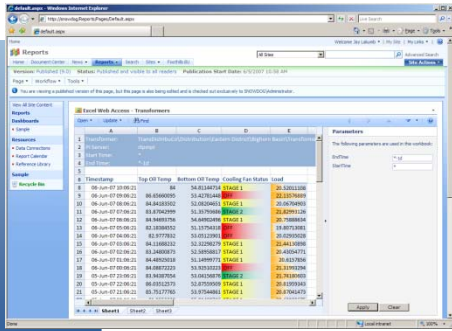
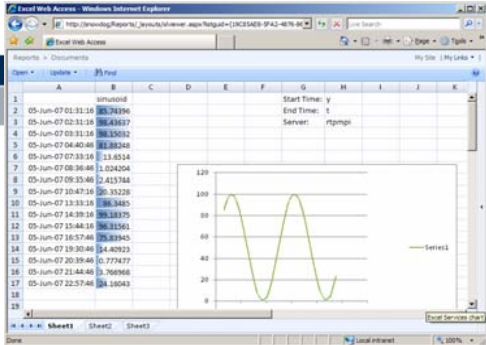
Current Excel usage



With Excel 2007 and Excel Service



DLES – Architecture



Web Front End

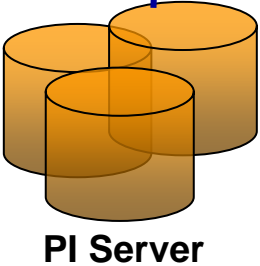
**Excel Web
Access**

**Excel Web
Access**

Application Server

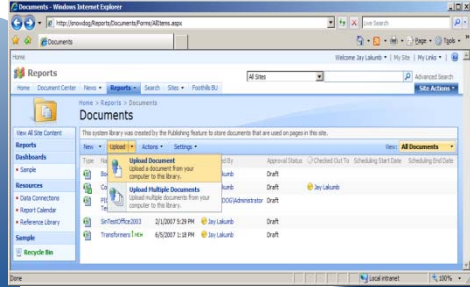
**DataLink for
Excel Services**

**Excel Calculation
Services**



**SharePoint Content
Database**

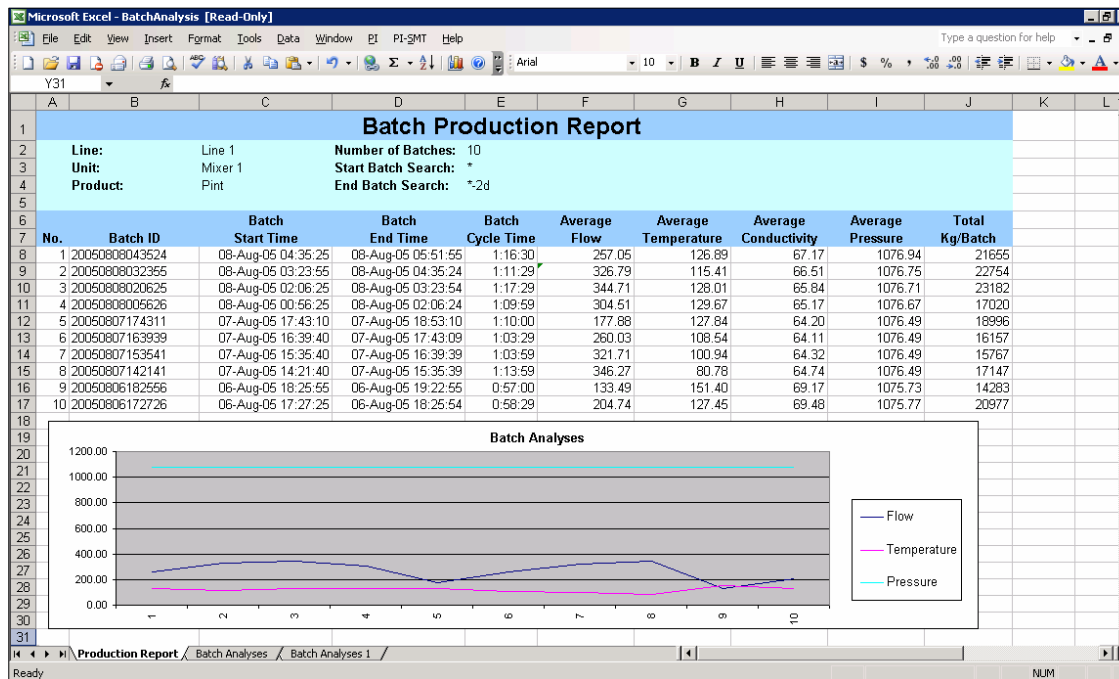
DataLink Spreadsheets



Demo Video

Current feature of DLES

- Support for DataLink functions
- Support for BatchView functions



DLES – System Requirements

- **Server**
 - Windows Server 2003
 - Office SharePoint Server 2007
 - Enterprise edition only (MOSS)
 - SQL Server
 - 2005, Express, or 2000
 - PI Server 3.3 or higher
- **Excel Client**
 - Excel 2007, or Excel 2003/XP/2000 with free Office 2007 Compatibility Pack
 - DataLink Add-In, or BatchView Add-In
- **Web Client**
 - Internet Explorer 6 or 7, or other standard Web browser
 - [Optional] Excel 2007, or Excel 2003/XP/2000 with free Office 2007 Compatibility Pack

What's Coming

- Current DataLink Function with new experience
- Publish spreadsheet on the website (DLES)
- New data formatting features
- Increased limits
 - More data - 1M rows by 16K cols
- Improved performance
 - Faster, multi-threaded Excel calculation engine

New UI in Excel 2007

- Ribbon makes it easier to find the right function

Book1 - Microsoft Excel

Home Insert Page Layout Formulas Data Review View Add-Ins PI

Current Value Single Value Functions Archive Value Tag Attributes Multiple Value Functions Compressed Data (Start Time/Number) Compressed Data (Start Time/End Time) Sampled Data Timed Data Calculation Functions Calculated Data Advanced Calculated Data Time Filtered Utility Functions Point ID to Tag Attribute Mask to Tag Alias Property

Developer PI

Calculated Data Advanced Calculated Data Time Filtered Point ID to Tag

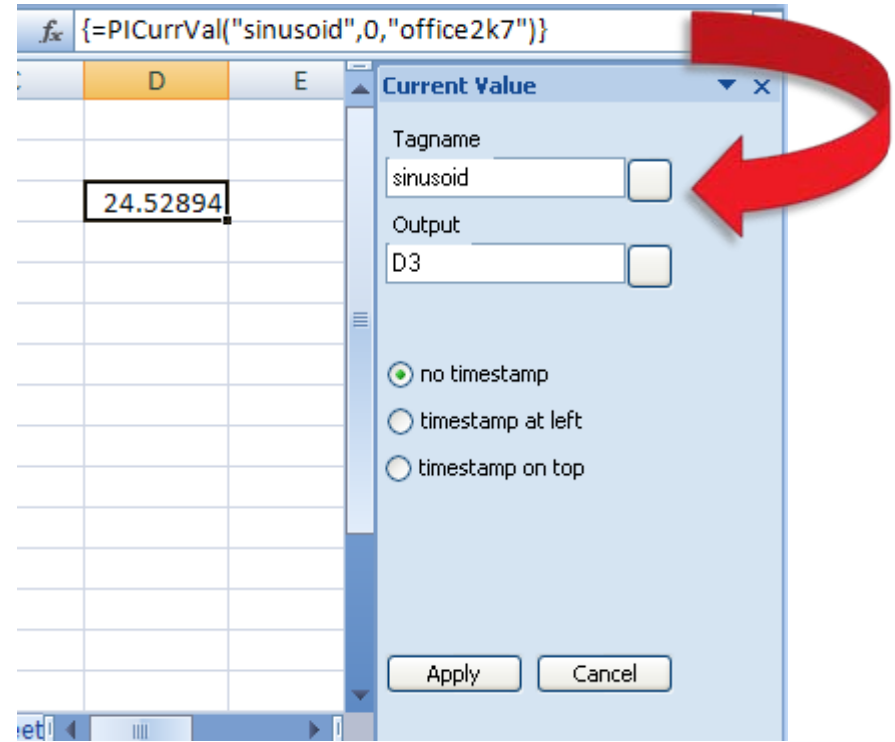
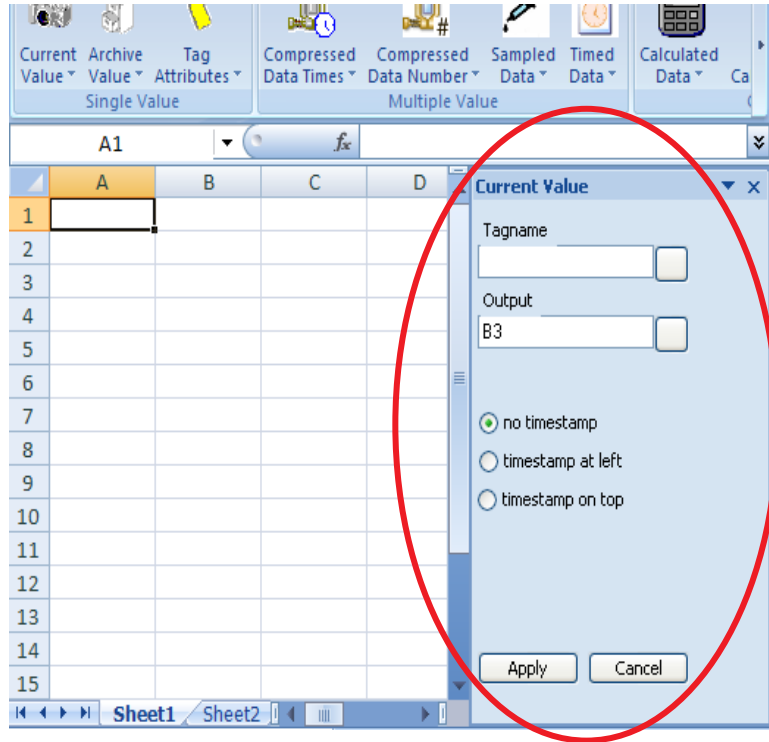
Calculated Data

Get time-weighted total, average, minimum, maximum, stdev, or range over a specified time period.

Calculated Hourly Data for Yesterday
Calculated Daily Data for Last Week
Calculated Daily Data for Last Month

New UI in Excel 2007

- Task pane makes it easier to modify a function



Formatting Features in Excel 2007

- Reports and tables are visually pleasing and provide instant feedback to find relevant data

6	Timestamp	Top Oil Temp	Bottom Oil Temp	Cooling Fan Status	Load	
8	06-Jun-07 10:56:17	82.06562805	↓	52.39182663	STAGE 1	20.23855972
9	06-Jun-07 09:56:17	82.3996582	→	53.36613464	STAGE 1	21.20740128
10	06-Jun-07 08:56:17	84.5425415	→	53.63465118	STAGE 2	20.74373055
11	06-Jun-07 07:56:17	82.96215057	→	53.04167938	STAGE 1	20.51634407
12	06-Jun-07 06:56:17	84.37345886	→	53.7178154	STAGE 1	20.11353683
13	06-Jun-07 05:56:17	86.36122131	→	52.98049164	OFF	20.6163578
14	06-Jun-07 04:56:17	85.26107788	→	52.96185684	OFF	19.67745018
15	06-Jun-07 03:56:17	83.11886597	↑	54.72557449	STAGE 1	19.84714508
16	06-Jun-07 02:56:17	81.49597168	↓	52.21590424	STAGE 1	19.99525833
17	06-Jun-07 01:56:17	82.89220428	↑	54.4969635	OFF	20.74225426

New Feature

- Support for PI Notifications

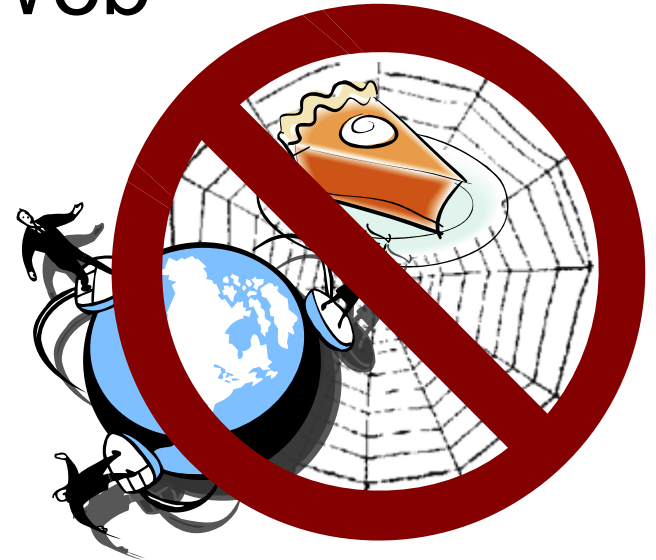
The screenshot shows a Microsoft Excel spreadsheet with a 'PI' add-in ribbon. The spreadsheet contains a table of notification data. A 'Notification Search' dialog box is open, displaying search results for the 'LITWAREDEMO' PI system. The dialog box includes a search criteria section and a table of results.

Start Time	End Time	Duration	State	Priority	Acknowledged	Action
7/31/2007 6:40	Active	Active	OutsideControl	Normal	No	Sen
7/31/2007 6:40	7/31/2007 6:41	00:01:20	OutsideControl	Low	No	Sen
7/31/2007 6:17	7/31/2007 6:20	00:02:30	OutsideControl	Normal	No	Sen
7/31/2007 6:06	7/31/2007 6:09	00:02:42	OutsideControl	Normal	No	Sen

RtWebParts

What is RtWebParts?

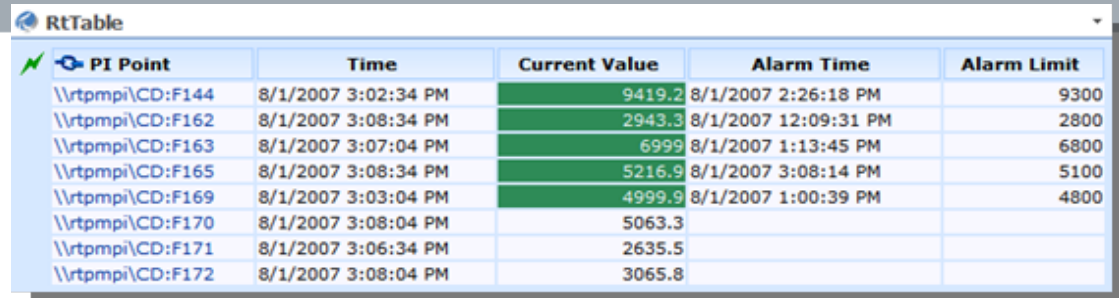
- RtWebParts – PI on the Web



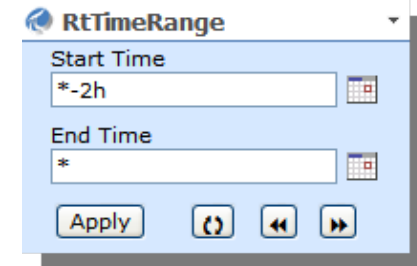
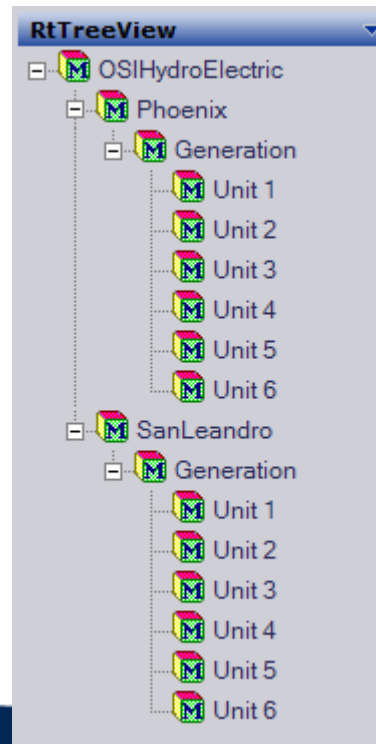
- Relies on the Microsoft SharePoint Portal Platform
- Gets Data from RtBaseline Services

Looking at RtWebParts

- RtTimeRange
- RtTreeView
- RtTable
- RtTrend
- RtGauge
- RtXYPlot
- RtValues etc



PI Point	Time	Current Value	Alarm Time	Alarm Limit
\\rtmpm\CD:F144	8/1/2007 3:02:34 PM	9419.2	8/1/2007 2:26:18 PM	9300
\\rtmpm\CD:F162	8/1/2007 3:08:34 PM	2943.3	8/1/2007 12:09:31 PM	2800
\\rtmpm\CD:F163	8/1/2007 3:07:04 PM	6999	8/1/2007 1:13:45 PM	6800
\\rtmpm\CD:F165	8/1/2007 3:08:34 PM	5216.9	8/1/2007 3:08:14 PM	5100
\\rtmpm\CD:F169	8/1/2007 3:03:04 PM	4999.9	8/1/2007 1:00:39 PM	4800
\\rtmpm\CD:F170	8/1/2007 3:08:04 PM	5063.3		
\\rtmpm\CD:F171	8/1/2007 3:06:34 PM	2635.5		
\\rtmpm\CD:F172	8/1/2007 3:08:04 PM	3065.8		



RtTimeRange

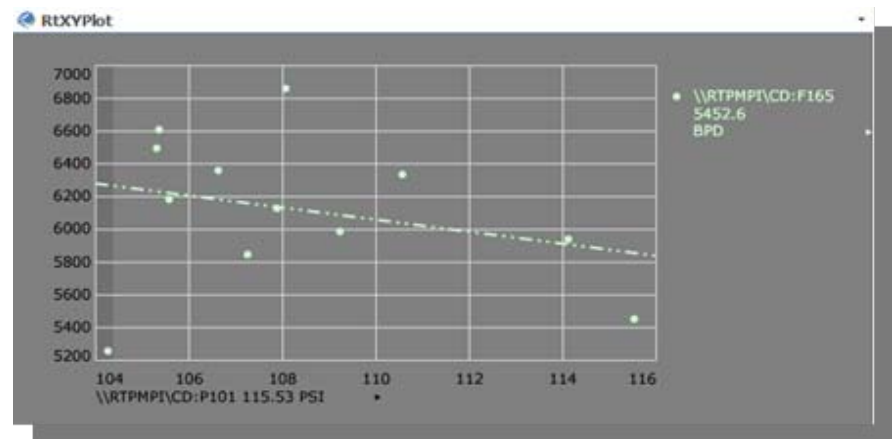
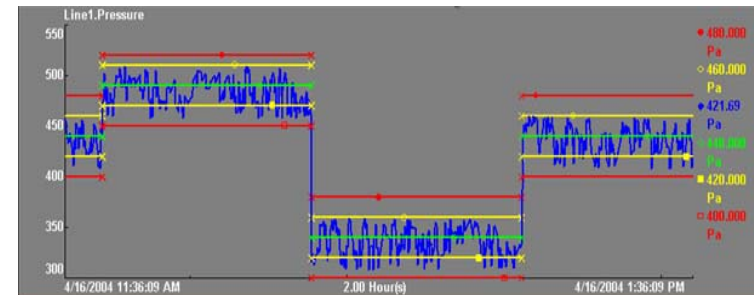
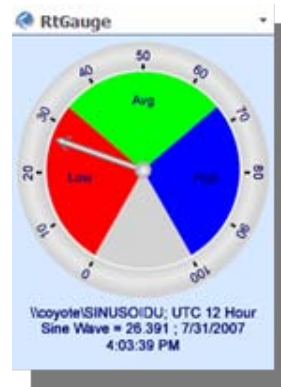
Start Time
*-2h

End Time
*

Apply [Refresh] [Previous] [Next]

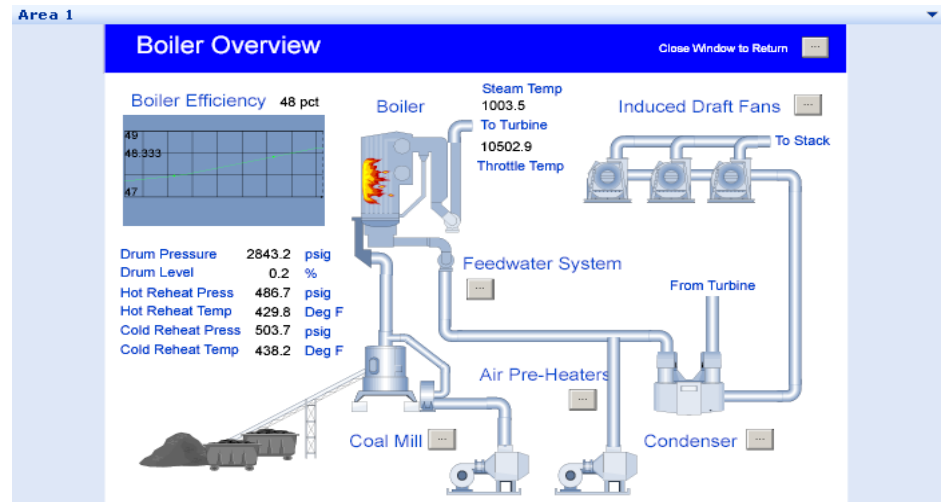
Looking at RtWebParts

- RtTimeRange
- RtTreeView
- RtTable
- RtTrend
- RtGauge
- RtXYPlot
- RtValues etc



Leveraging ProcessBook

- RtGraphic
 - SVG-Based
 - Lightweight
- RtActiveView
 - Supports PDIs
 - Requires ActiveView License & Installation



What's new (in RtWebParts v1.2)?

- Released January 10, 2007
 - **High Availability**
 - Expensive Query Handling
 - Complex Web Service Support
 - RtGraphic Support for Multistate Symbols
 - Japanese Language Pack

What's new (in RtWebParts v2.0)?

- Released June 21, 2007
- MOSS!
 - Workflow
 - Content Management
 - Excel Web Access Web Part
- New Ad hoc Trend
(URL-Configurable)

What's next?

- RtWebParts v2.1
 - Contextual Web Part for Batch Searching
 - Tabular Web Part Enhancements
- RtWebParts v2.2
 - AF 2.0
 - PI Notifications
 - Language Packs

Requirements

- Microsoft Windows 2003 Server SP1 or greater.
- Microsoft Internet Information Server (IIS) 6.0 with Windows Script Host (WSH) enabled.
- Microsoft .NET framework 3.0 and ASP.NET 2.0 enabled
- Windows SharePoint Services 3.0 or Microsoft Office SharePoint Portal Server 2007
- SQL Server 2000 or MSDE
- Access to PI server 3.3x

The End

