



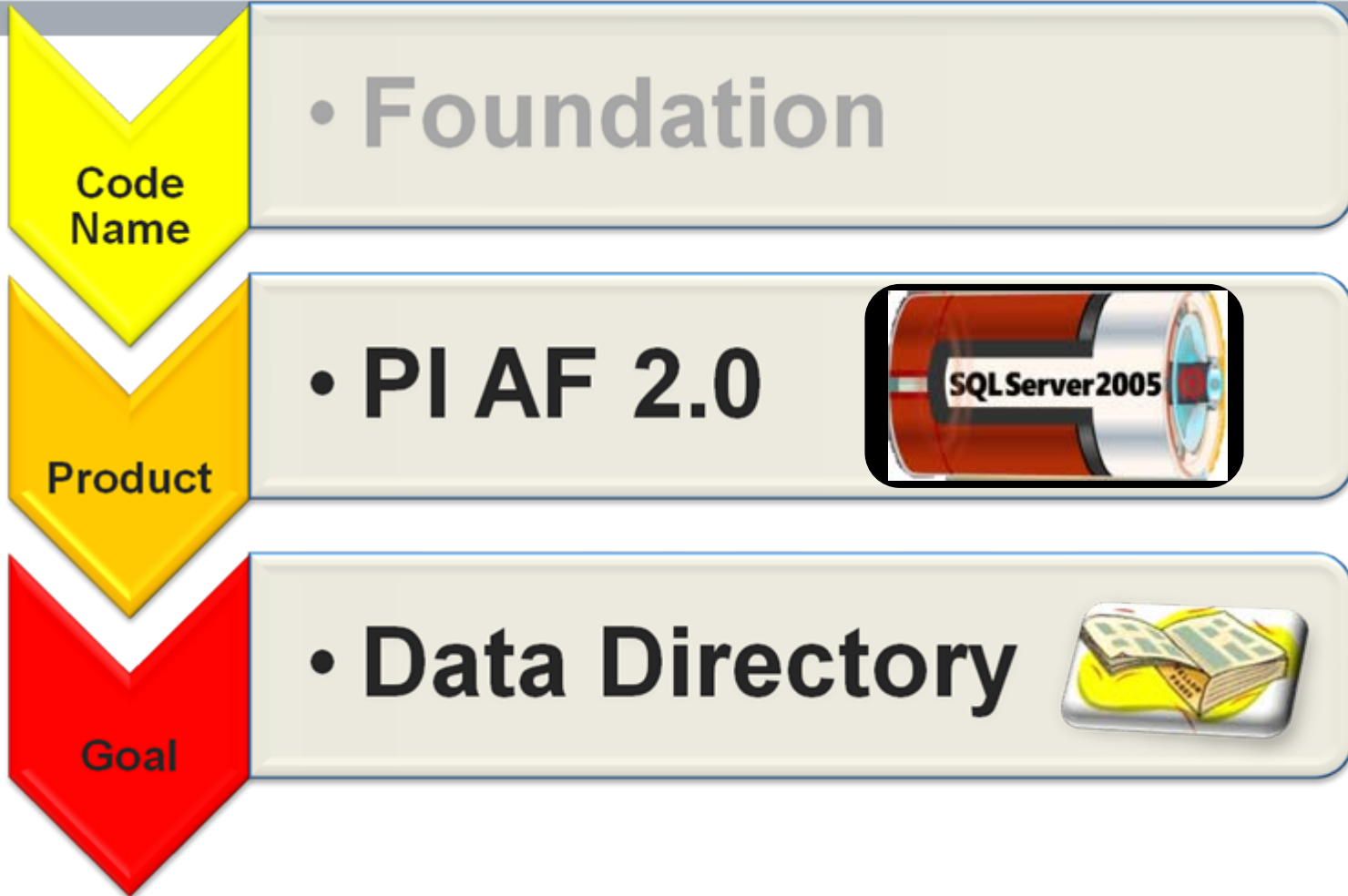
# AF2.0 协助你有 效的管理数据

**Felicia Tan**  
技术工程师

# Agenda

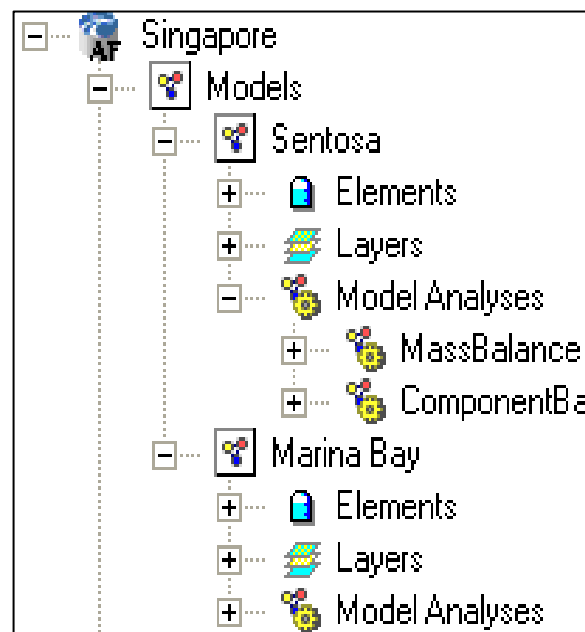
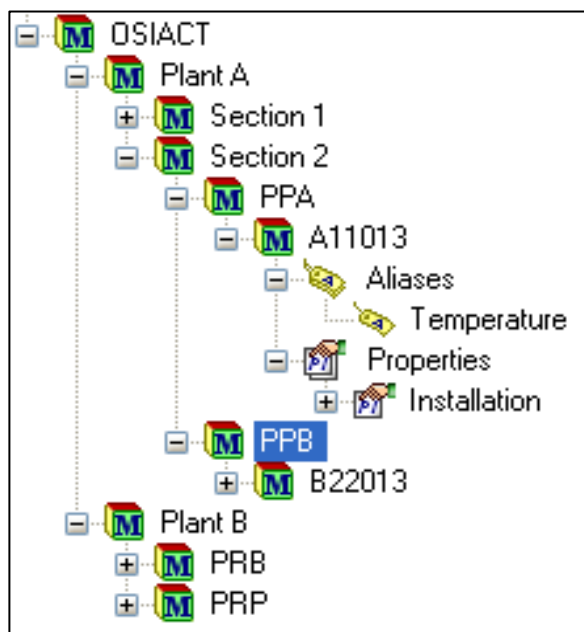
- What's AF 2.0?
- The value of AF
- Demonstrations
- Backwards compatibility
- Requirements

# Foundation by any other name



# What is AF 2.0?

The best of PI MDB and PI AF 1.x combined  
**... and a lot more!**



# The value of AF: structure

- PI is extremely good at:
  - Collect data from almost anywhere
  - Massive scalability, Highly available
- Flat points database
  - Organize your data
- Meta-data: a **structure** for the data
  - PI supplies data
  - AF supplies structure and access to more data

# Why add structure?

- Structure is ***your*** knowledge applied to ***your*** data
- Structure helps you:
  - Keep track of your assets and data
  - Store your domain expertise
  - Rapidly build applications and displays
  - Find information in user-friendly way

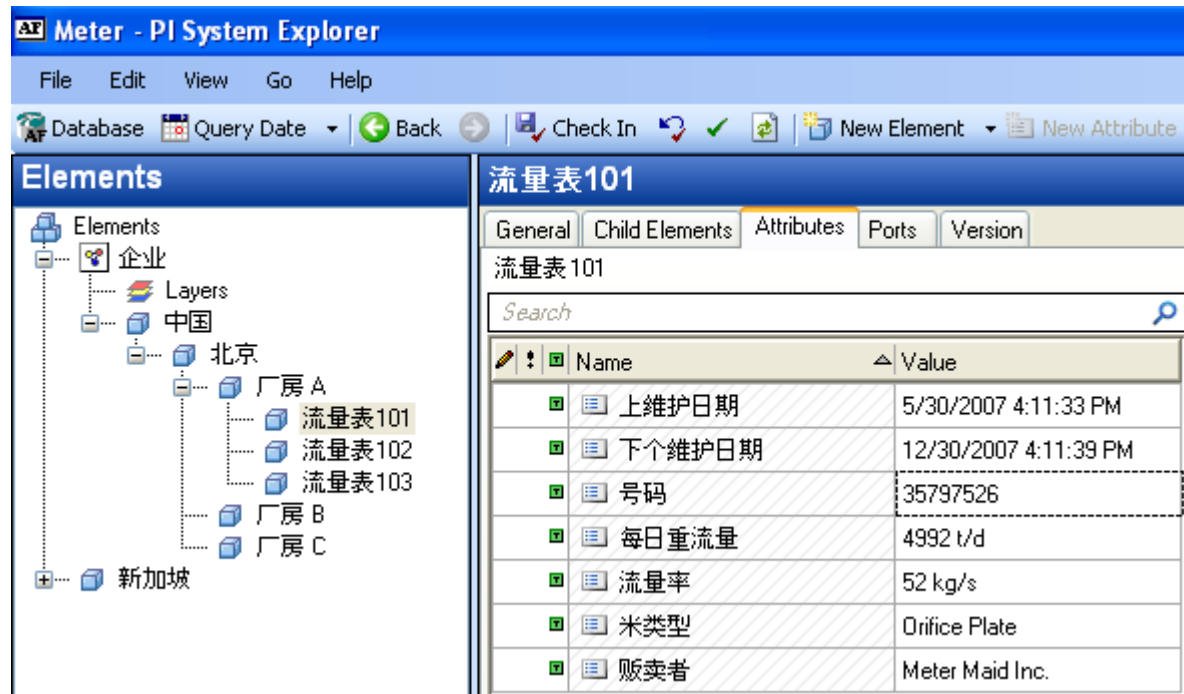
# AF shapes your data

AF is designed to store structure:

- Defining types of assets → Templates
- Associating points with assets → Elements
- Extra information about points → Attributes
- Physical/logical asset structure → Hierarchy
- Assets connectivity → Models
- Transactions → Transfers

# One Stop Shopping

- Locate the equipment in the tree
- Data from many sources
- No Code, only Configuration



**Meter - PI System Explorer**

File Edit View Go Help

Database Query Date Back Check In New Element New Attribute

**Elements**

- Elements
  - 企业
    - Layers
      - 中国
        - 北京
          - 厂房 A
            - 流量计 101
            - 流量计 102
            - 流量计 103
          - 厂房 B
          - 厂房 C
        - 新加坡

**流量计 101**

General Child Elements Attributes Ports Version

流量计 101

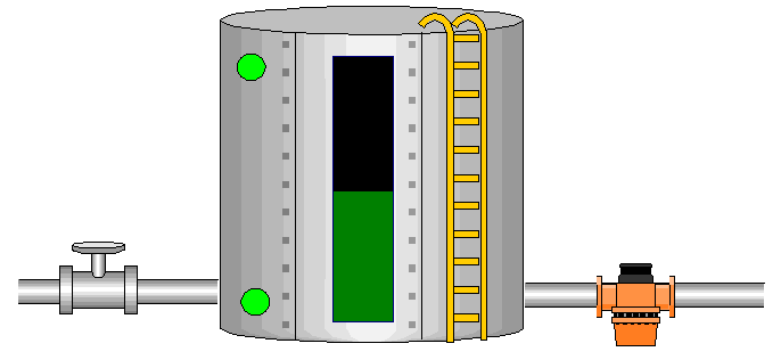
Search

Name	Value
上维护日期	5/30/2007 4:11:33 PM
下个维护日期	12/30/2007 4:11:39 PM
号码	35797526
每日重流量	4992 t/d
流量率	52 kg/s
米类型	Orifice Plate
贩卖者	Meter Maid Inc.

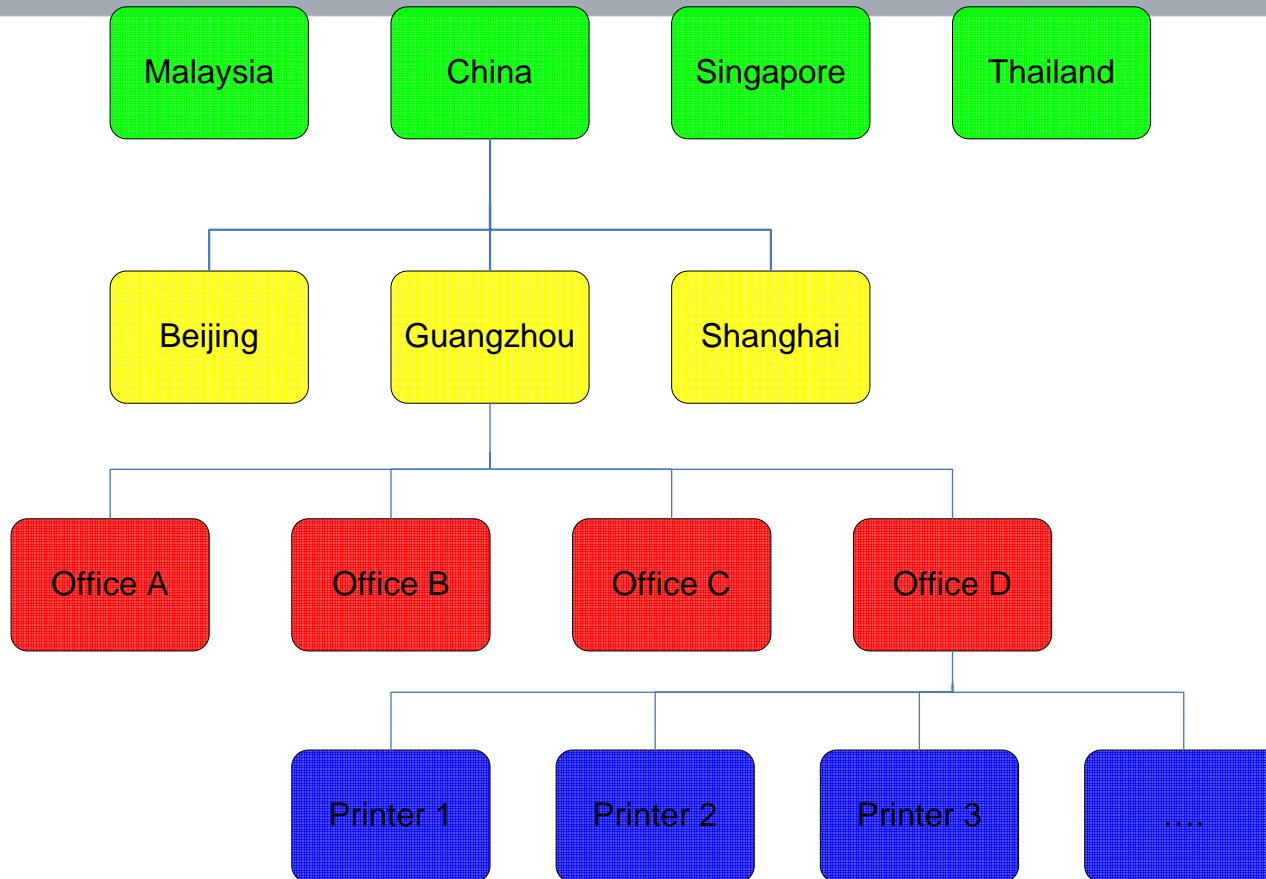


# Storing your Expertise

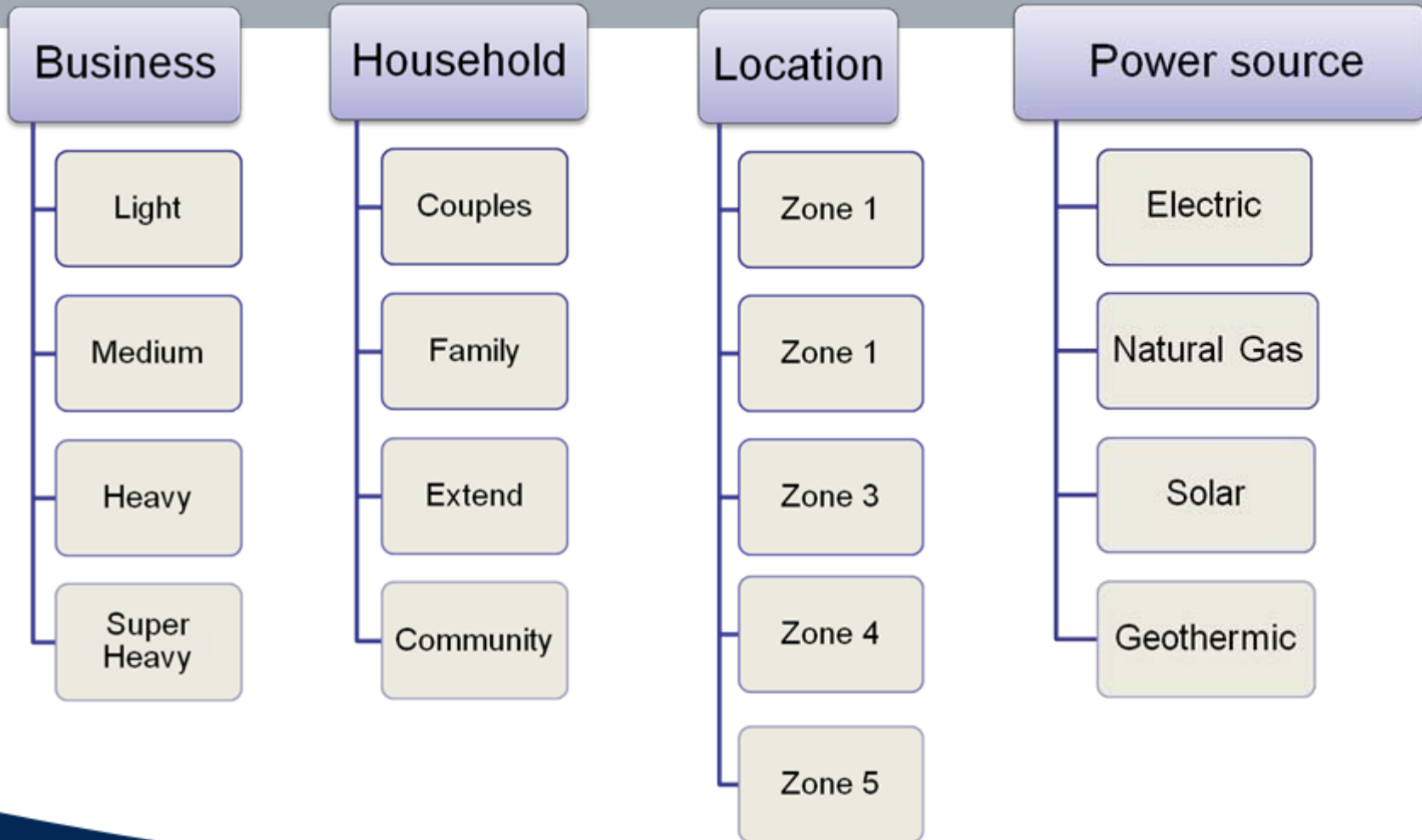
- How to totalize flow rates in/out of Tank
- Limits for notification on Tank
- Alarm states on Tank
- Strapping table
- Capacity of Tank
- Production line for Tank
- Downstream units of Tank
- Responsible person for production line



# Hierarchical view



# Categories



**AF 2.0**

# Knowing Where to Look

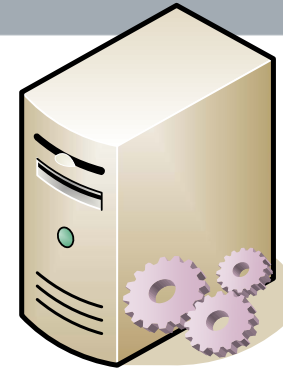
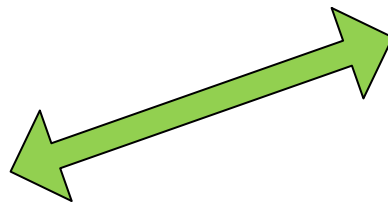
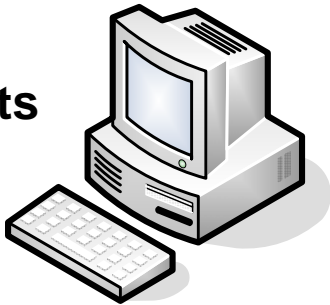
- Adding your structure is done once
  - Organize points
  - Consistent naming
  - Static configured data
  - Data from other systems
- This structure benefits all PI users forever
  - Searches across PI systems
  - Search for information related to the business
  - Ability to view and use additional information

# The AF compatibility layer

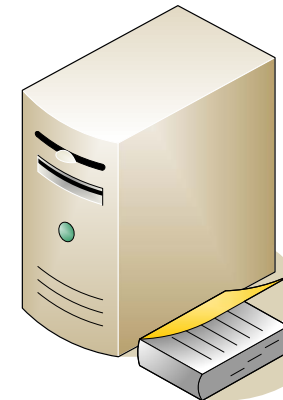
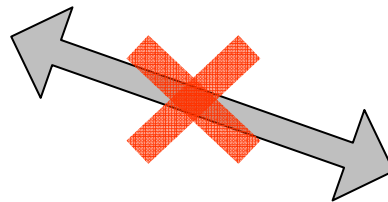
- Redirect all AF 1.x clients towards AF 2.0
  - AF Explorer
  - AF Modeler for ProcessBook
  - AF Excel Add-ins
  - Custom DR, AR
- New AF 2.0 features not supported by old clients

# No compatibility layer

AF Clients  
1.X

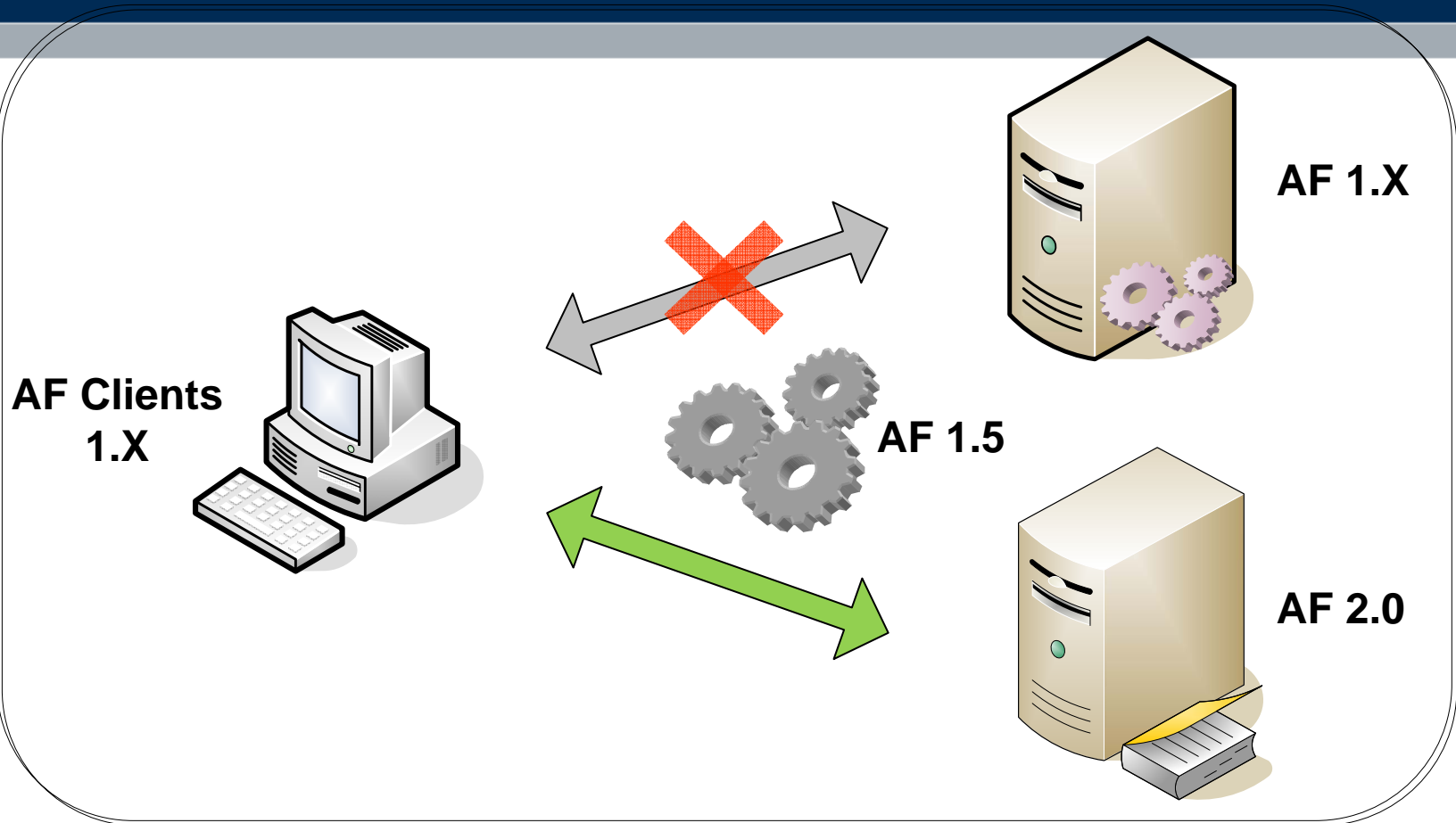


AF 1.X



AF 2.0

# With the AF 1.5 compatibility layer





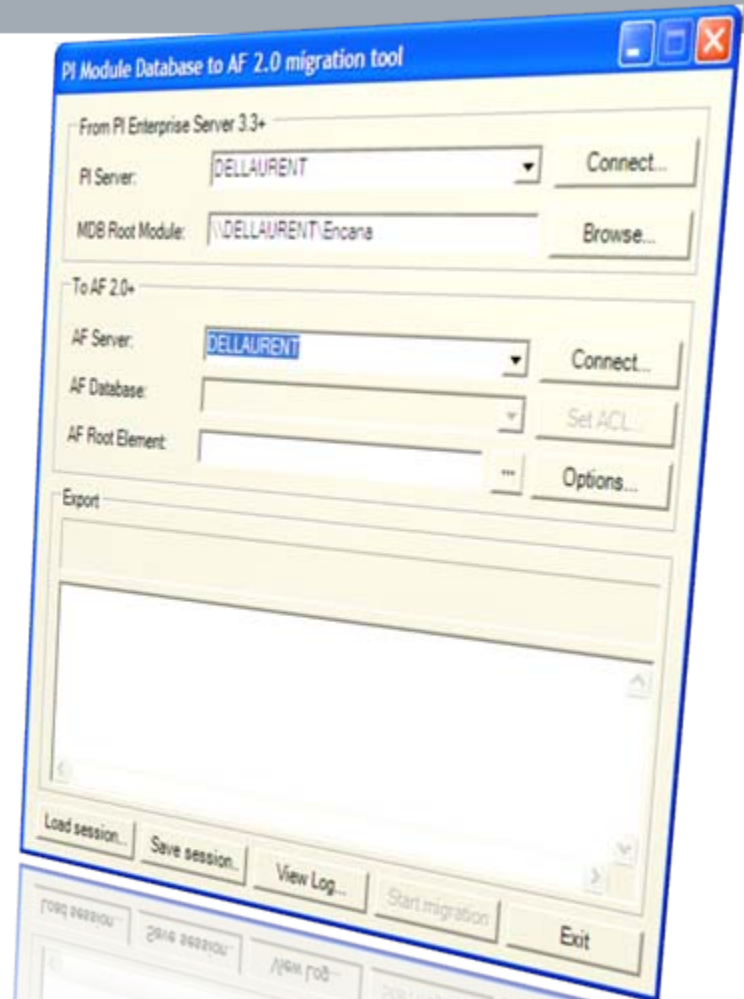
# AF upgrade utility

From AF 1.x  
To AF 2.0



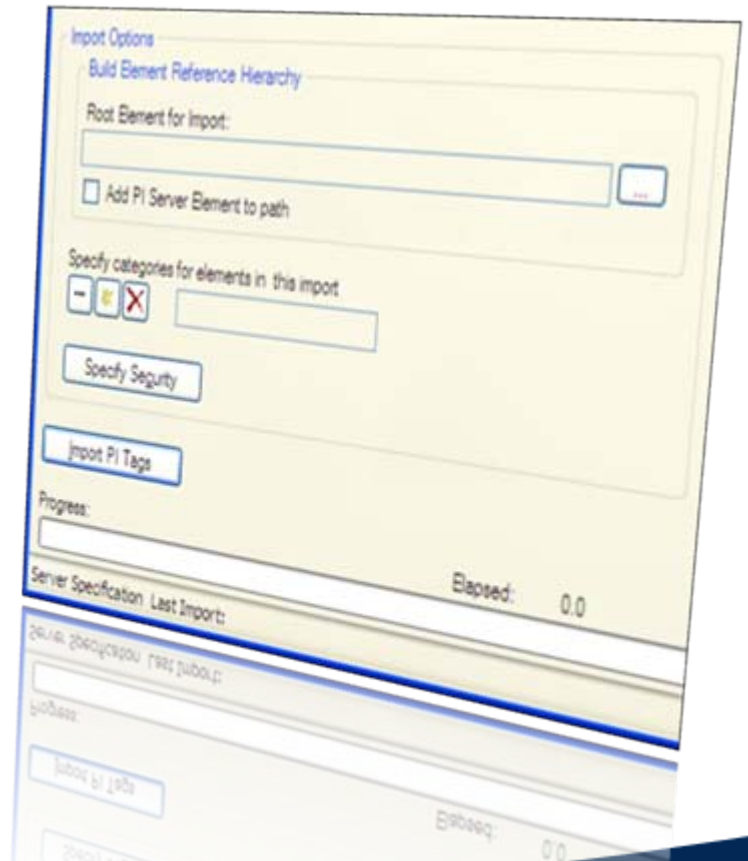
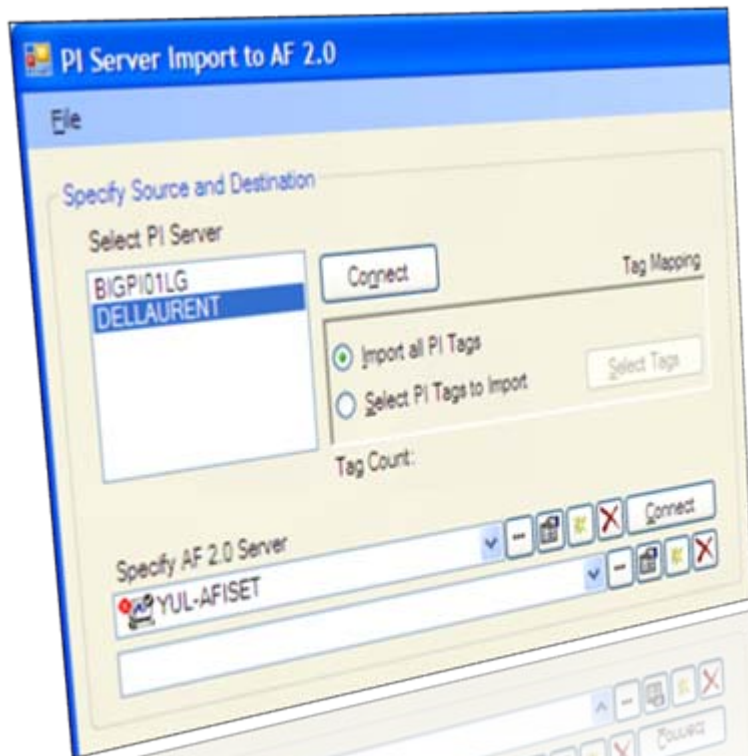
# Migration from PI MDB

**From PI MDB  
To AF 2.0**



# Getting started with AF 2.0

## The PIServerImport utility



# Requirements

- SQL Server 2005 or SQL Server Express 2005
- PI Server 3.2.354.0 or more recent
- Microsoft .NET Framework 3.0
- Operating System must be Windows XP or greater

Go for a test drive!

技术示范